







## LIAISON

---

In creating the nucleus of a new collection, Fine Art envisaged distinctly individual designs that communicate with each other in intimate harmony—the essence of a liaison. Each piece is unique in time and space, executed in hand-crafted metal with extensive component details and articulation, finished in a choice of antique hand-rubbed bronze or standard silver leaf. The glass shades are hand-blown with random glass overlay hand-worked by Fine Art glass artisans in clear glass with a partial, graduated satin frosting.

OUR STUDIO GLASS IS INDIVIDUALLY HANDMADE.

In all studio glass, slight variations in shape, size, markings and bubbles are inherent in the process, and are the characteristics that distinguish handmade studio art glass from mass produced glass work.

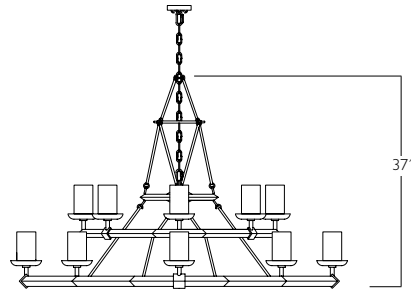
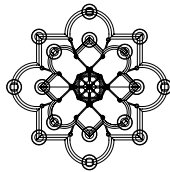


## 58" ROUND CHANDELIER

**Model #**  
860540 Antique Hand-Rubbed Bronze

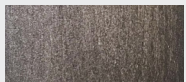
**Dimensions**  
H 54" (137 cm) W 58" (147 cm)  
Min Height: 44" (113 cm) Max Height: 128" (325 cm)

**Electrical**  
US: B10 INTL: B35 E14 | Candelabra, 60w max (Qty. 16)  
Suitable for vaulted ceiling.



Removable links specifically for lower ceilings.

**FINISH OPTIONS** Also available in our five Standard Finish Options. See pg 402.



Bronze  
(No Suffix)



Standard Silver Leaf  
(-2)



## 12" SCONCE

**Model #**

860950-2 Standard Silver Leaf

**Dimensions**

H 12" (30 cm) W 6" (15 cm) D 6" (15 cm)

**Electrical**

US: B10 INTL: B35 E14 | Candelabra, 60w max (Qty. 1)

US/INTL bulbs are not included for all items in this collection.